

OERA-HS1

OPTOKON ELEKTRONİK HEADSET



- INSTRUCTION FOR USE



Unscrew the battery cover counterclockwise
Place AAA (size 7) dry battery as shown

※ Place one section on each side

※ After the battery is placed, the battery cover needs to be tightened,
otherwise it cannot be powered



With the goal of wearing comfort as the goal, adjust the headset up
and down to the appropriate wearing position as shown in the figure.



Connect the earphone cable as
shown in the figure.



- OPERATION METHOD

Power on: press the power button to power on.

Indoor/outdoor mode: Short press [VOL+]+[VOL-] at the same time to switch
indoor/outdoor mode

Listening mode: Long press [VOL+] to switch to listening mode at maximum
volume.

QUICK CONNECT TO HELMET



Untie the Velcro fixing the
cable as shown

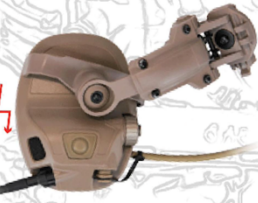


Separate the head beam from
the headset as shown



Unfasten the
fixed rubber
strap

● Install the connecting bridge

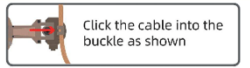
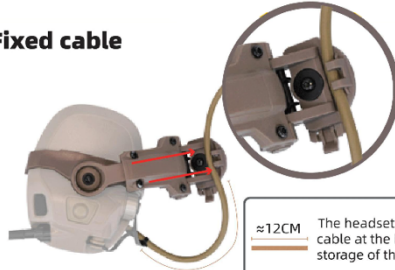


Install the connecting
bridge as shown



※ Pay attention to the direction of the buckle
of the connecting bridge. The picture shows that the
buckles are aligned correctly.

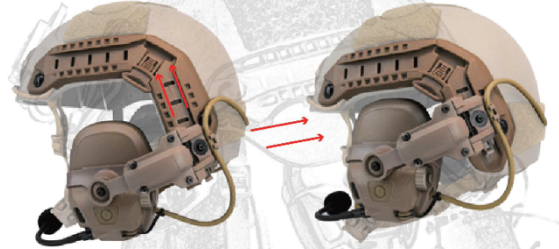
● Fixed cable



Click the cable into the
buckle as shown

≈12CM The headset retains about 12CM
cable at the bayonet for mobile
storage of the headset.

● Connect helmet



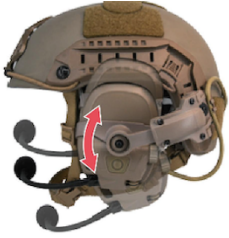
Click the connecting bridge along the FAST rail as
shown in the figure and adjust it to a suitable position.

● Install Velcro



Stick the triangle Velcro to the inside of the helmet as shown, and stick
the long strip of Velcro to the outside of the helmet to fix the cable

ADJUST THE HEADSET



Untie the Velcro fixing the cable as shown



Adjust to the right state before and after



Adjust the angle according to the icon



Store as shown

EXPONENTIAL FREQUENCY ATTENUATION TABLE OF ACTIVE NOISE REDUCTION SYSTEM

Frequency(Hz)	125	250	500	1000	2000	4000	8000
Mean Attenuation(dB)	11.2	16.6	23.5	27.2	30.1	34.8	36.6
Standard Deviation(dB)	3	3	3	2	2	2	3
Min Attenuation(dB)	9.3	15.6	25.5	27.4	28.7	33.6	36.9
NRR	NRR:20dB H:27dB M:20dB L:16dB						

IN PACKAGE

- 1 OERA-HS1
- 2 Headset Downlead Cable
- 3 Velcro
- 4 Helmet Bridge
- 5 User Manual

